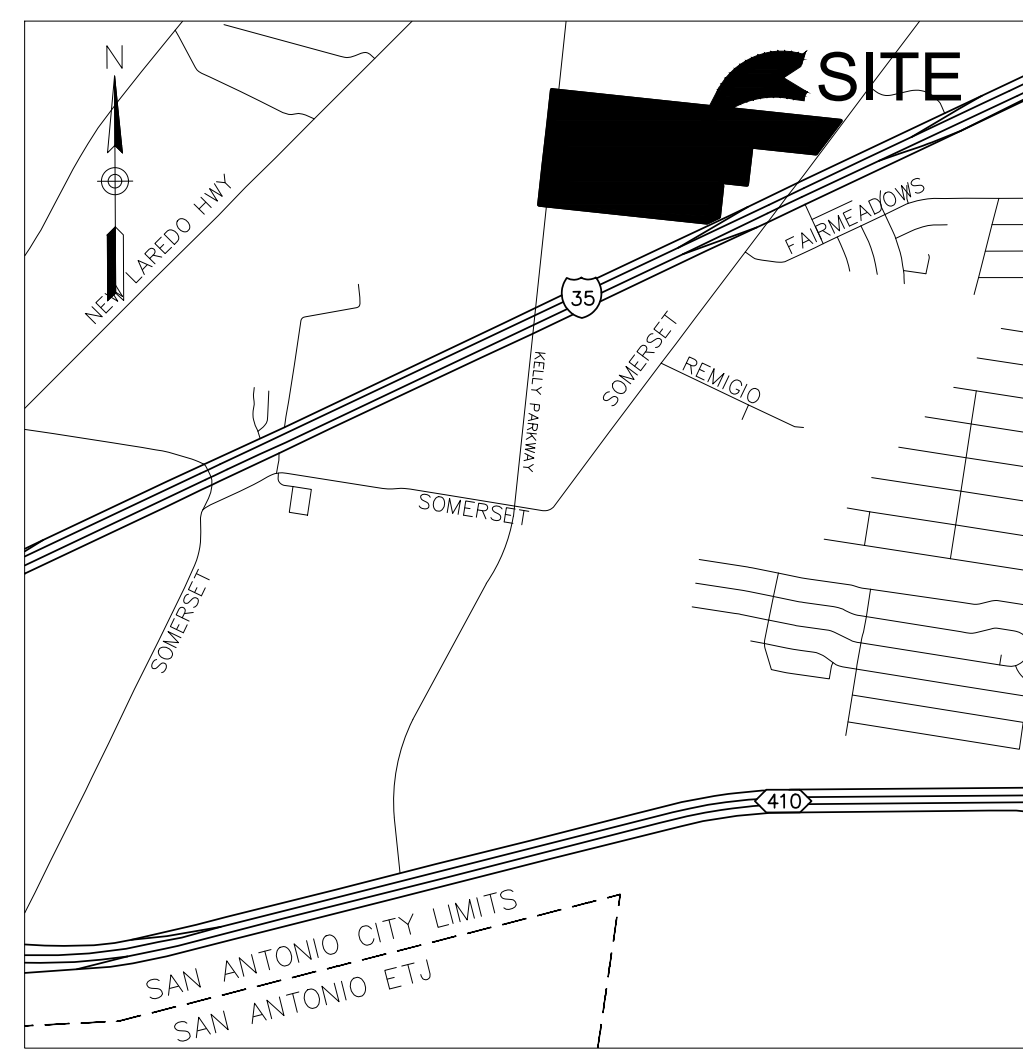
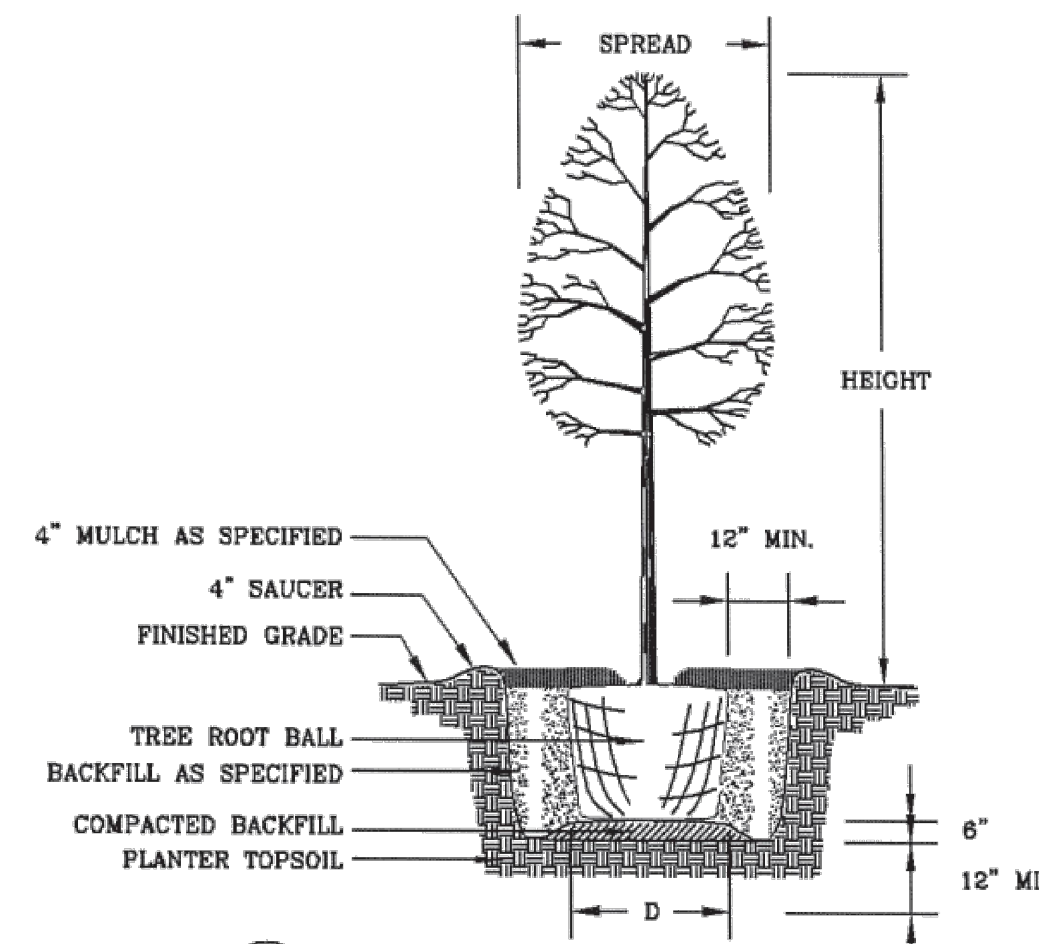


CITY OF SAN ANTONIO  
 290 S. CASTELL AVE., STE. 100  
 NEW BRAUNFELS, TX 78130  
 TBPE FIRM F-10961  
 TBPLS FIRM 1053600

**HMT**  
 ENGINEERING & SURVEYING



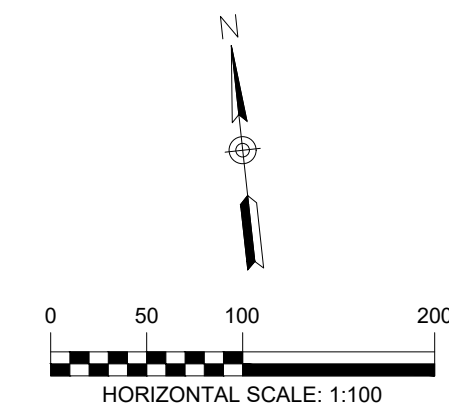
LOCATION MAP N.T.S.



TREE PLANTING DETAIL N.T.S.

GENERAL NOTES

1. LANDSCAPE CONTRACTOR SHALL BE RESPONSIBLE FOR MAKING HIMSELF FAMILIAR WITH THE SPECIFICATIONS AND ALL SUBMITTAL REQUIREMENTS. IT IS THE RESPONSIBILITY OF THE LANDSCAPE CONTRACTOR TO NOTIFY THE LANDSCAPE ARCHITECT FOR SITE INSPECTIONS AS SPECIFIED IN THE SPECIFICATIONS. FAILURE TO NOTIFY THE LANDSCAPE ARCHITECT DOES NOT RELIEVE THE CONTRACTOR FROM INSPECTION APPROVAL AT THE COST OF THE CONTRACTOR. LANDSCAPE CONTRACTOR IS TO INFORM LANDSCAPE ARCHITECT OF THE START DATE OF WORK.
2. THE LANDSCAPE CONTRACTOR IS TO NOTIFY TEXAS ONE CALL (800-245-4545) AND 800 DIGG-TESS (800-344-8377) 72 HOURS PRIOR TO ANY EXCAVATION. LANDSCAPE CONTRACTOR SHALL BE RESPONSIBLE FOR MAKING HIMSELF FAMILIAR WITH ALL UNDERGROUND UTILITIES, PIPES AND STRUCTURES. LANDSCAPE CONTRACTOR SHALL TAKE SOLE RESPONSIBILITY FOR ANY COST INCURRED DUE TO DAMAGED OF SAID UTILITIES WHEATEAR OR NOT TEXAS ONE CALL IS NOTIFIED.
3. DO NOT WILLINGLY PROCEED WITH CONSTRUCTION AS DESIGNED WHEN IT IS OBVIOUS OBSTRUCTION AND/OR GRADE DIFFERENCES EXIST THAT MAY HAVE BEEN KNOWN DURING DESIGN. SUCH CONDITIONS SHALL BE IMMEDIATELY BROUGHT TO THE ATTENTION OF THE LANDSCAPE ARCHITECT. THE CONTRACTOR SHALL ASSUME FULL RESPONSIBILITY FOR ALL NECESSARY REVISIONS DUE TO FAILURE TO GIVE SUCH NOTIFICATION.
4. THE CONTRACTOR SHALL BE RESPONSIBLE FOR ANY COORDINATION WITH SUBCONTRACTORS AS REQUIRED TO ACCOMPLISH PLANTING OPERATIONS.
5. IF CONFLICTS ARISE BETWEEN SIZE OF AREAS AND PLANS, CONTRACTOR IS TO CONTACT LANDSCAPE ARCHITECT FOR RESOLUTION. FAILURE TO MAKE SUCH CONFLICTS KNOWN WILL RESULT IN CONTRACTORS LIABILITY TO RELOCATE THE MATERIALS.
6. SEE SPECIFICATIONS FOR PLANTING REQUIREMENTS, MATERIALS AND EXECUTION.
7. SEED TO LIMITS OF GRADING AND TO REPAIR CONSTRUCTION DAMAGE. SEE CIVIL DRAWINGS.
8. ALL DISTRIBUTED AREAS DUE TO CONSTRUCTION OPERATIONS SHALL RECEIVE HYDRO MULCH SEED.
9. INSTALL ABOVE GROUND TEMPORARY IRRIGATION SYSTEM TO ESTABLISH SEED. USE FIRE HYDRANT WITH TEMPORARY METER.

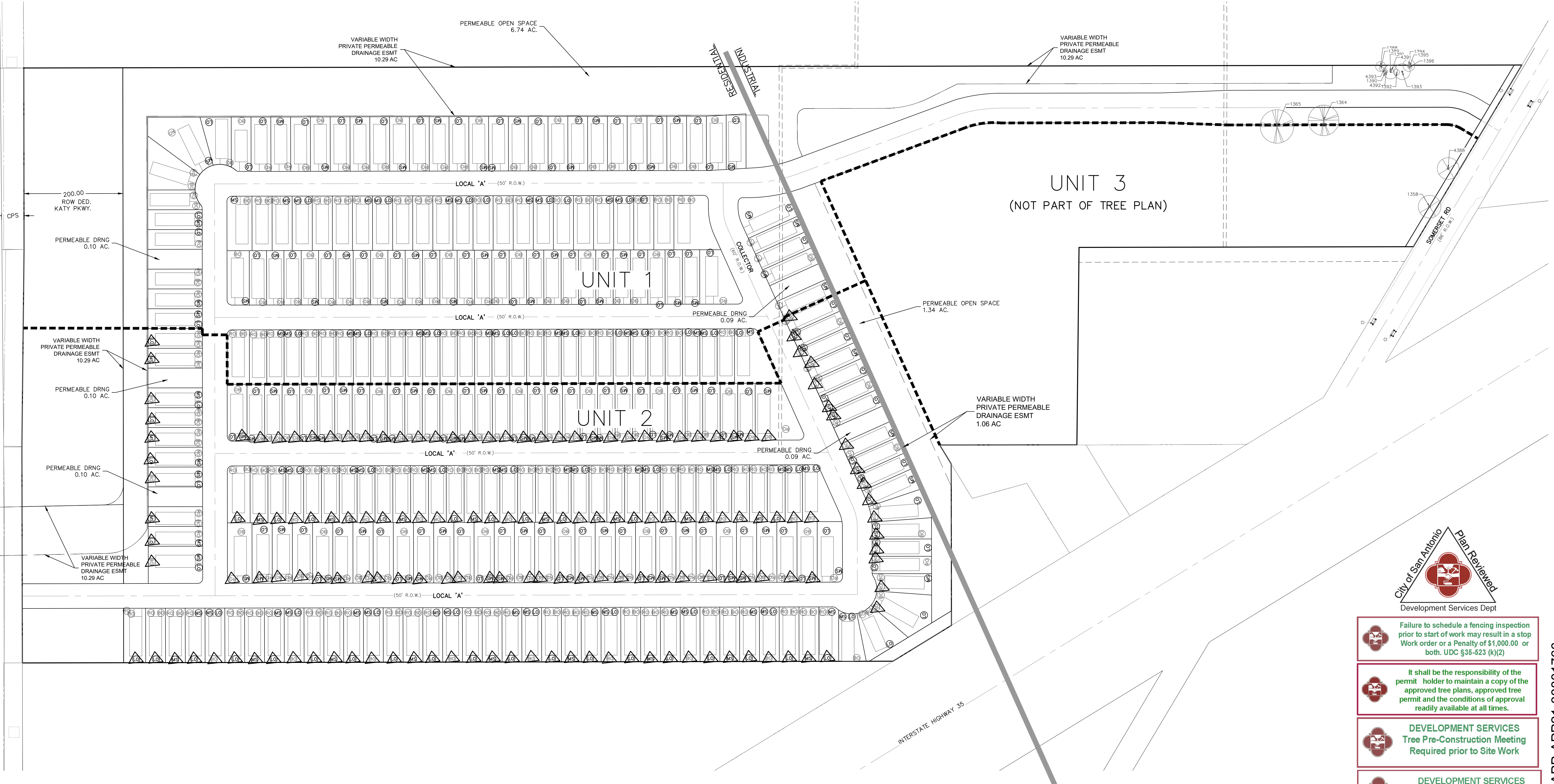


NOTE:  
 UNIT 3 IS ZONED INDUSTRIAL AT THE TIME OF THIS PLAN.  
 PROPOSED GRADING IS NOT DETERMINED AT THIS TIME, AND WILL BE PROVIDED WITH THE PLAT SUBMITTAL.

**LEGEND**

- 700 --- EXISTING CONTOURS
- XXXX PROTECTED TREE TO REMAIN (XXXX = TREE NUMBER)
- XXXX HERITAGE TREE TO BE REMOVED (XXXX = TREE NUMBER)
- XXXX TREE IN RIPARIAN ZONE TO REMAIN (XXXX = TREE NUMBER)
- XXXX UNPROTECTED TREE TO BE REMOVED (XXXX = TREE NUMBER)
- RO SHUMARD RED OAK (1200 S.F.)
- MS MEXICAN SYCAMORE (1200 S.F.)
- EO BURR OAK (1200 S.F.)
- LO LIVE OAK (875 S.F.)
- ▲ ENERGY CREDIT TREE (1.35X CANOPY COVERAGE)

LIST OF TREES ON SHEETS TP1.3



SOURCE: EXISTING CONTOURS: FIELD TOPO - HMT 2021

TREE PLANTING PLAN  
 SOMERSET MEADOWS TRACT  
 SAN ANTONIO, TX

City of San Antonio  
 Development Services Dept

Failure to schedule a fencing inspection prior to start of work may result in a stop work order or a Penalty of \$1,000.00 or both. UDC §35-623 (k)(2)

It shall be the responsibility of the permit holder to maintain a copy of the approved tree plans, approved tree permit and the conditions of approval readily available at all times.

DEVELOPMENT SERVICES  
 Tree Pre-Construction Meeting  
 Required prior to Site Work

DEVELOPMENT SERVICES  
 TREE PROTECTION SECTION  
 REVIEWED FOR COMPLIANCE

NO.	REVISION DESCRIPTION	REVISION DATE

DATE: December 21  
 DRAWN BY: BF  
 DESIGNED BY: CC  
 REVIEWED BY: ESP  
 HMT PROJECT NO.: 337.030

**SHEET**  
 TP2.0

Drawing Name: M:\Projects\337 - Somerset Grove East Master Plan\CD\Tree Protection\337.030 Tree Planting Plan.dwg User: bryoff Dec 15, 2021 8:22pm